

Booking is going on in

Mob: 7903070086

Aditya

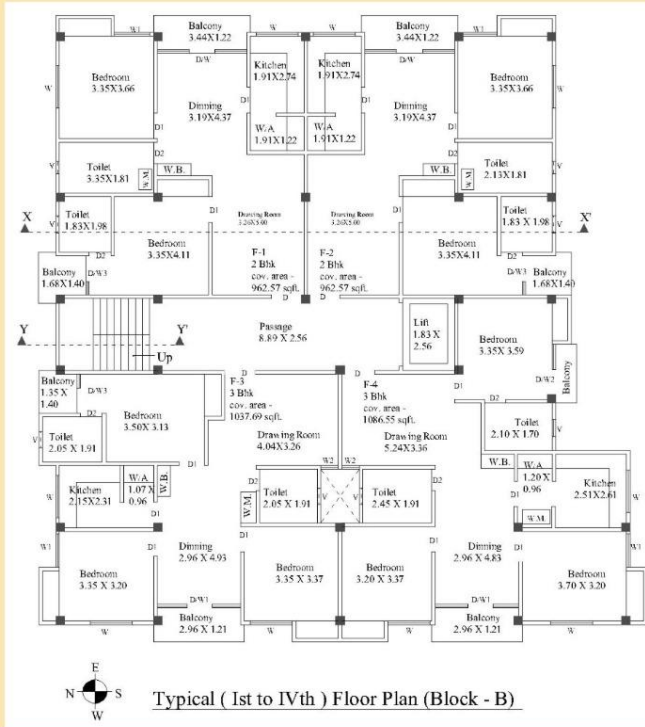
RAGUBANSH ENCLAVE



Project By:

Building Add: Shivganj Sital Tola, Bus Stand Road, Ara - 802301

Aditya Builders Boring Road, Patna

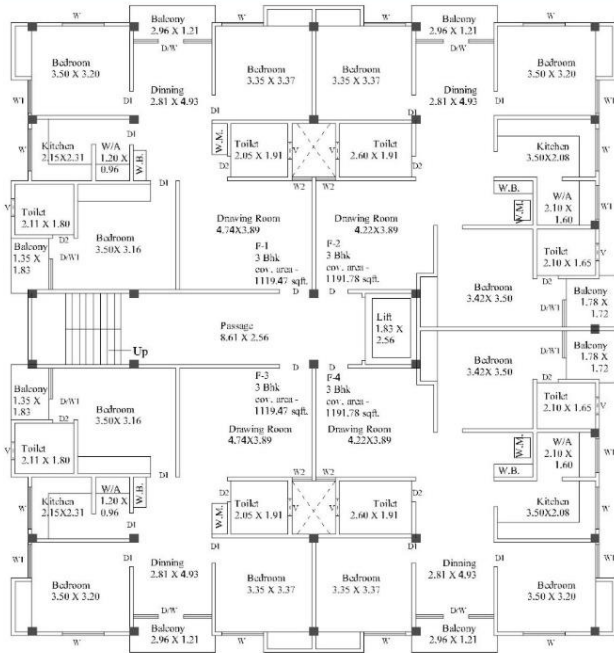


Typical (1st to IVth) Floor Plan (Block - B)

Block - B

A	F-1 (2 BHK)	1203.21 sqft.
B	F-2 (2 BHK)	1203.21 sqft.
C	F-3 (3 BHK)	1297.11 sqft.
D	F-4 (3 BHK)	1358.18 sqft.
E	Parking Area	3689.43 sqft.

2 & 3 BHK Flats



Typical (1st to 1Vth) Floor Plan (Block - A)

Block - A

A	F-1 (3 BHK)	1399.34 sqft.
B	F-2 (3 BHK)	1489.72 sqft.
C	F-3 (3 BHK)	1399.34 sqft.
D	F-4 (3 BHK)	1489.72 sqft.
E	Parking Area	4421.92 sqft.

2 & 3 BHK Flats

ADITYA RAGHUBANSH ENCLAVE



A Project by : **Aditya Builders**

SPECIFICATIONS

Foundation:	RCC Pile Foundation Design
Structure:	RCC frame structure with brickwork in cement mortar as per design & earthquake resistant
Floors:	Vitrified floor tiles for bedroom and white marble stone for drawing, dining and staircase
Chowkhate:	Door frames of hardwood (Sakua) 5"x2.5"
Doors:	32mm thick ISI mark flush door shutters, painted with a coat of primer. Main doors to be modular (Godrej/Equivalent)
Windows:	Aluminium frame fitted with 4mm glass
Kitchen:	Working platform fitted with pre-polished black granite & stainless steel sink with drain board with CP fitting. Ceramic tiles of 8" x 12" size on wall up to 2ft above working platform. Each kitchen will have water point for water purifier.
Toilets:	Flooring with Ceramic Tiles (Somany). Walls-Somany/Orient glazed tiles up to 6ft height with geyser points in all toilets.
Water Proofing:	Sunkan Slab of toilet for a water proofing treatment.
Sanitary Ware:	White glazed vitreous sanitary ware (Parryware/Hindware).
Electrical:	Concealed conduit wiring using copper conductors FINOLEX, Modular switches & sockets CRABTREE.
TV/TEL Plug Point:	TV points and telephone plug points provided in drawing room and all bedrooms plus intercom in drawing room.
Washing Machine Point:	Washing machine point with water inlet and outlet provided at suitable location.
Wall Finish:	Internal - All internal walls duly surfaced with Plaster of Paris (POP), ICI External - All exterior walls finished with SANTEXMATT or WEATHER SHIELD
Parking Area:	Parking with sufficient light points and flooring done by marble crazy.
Overhead Tank:	Overhead water tank of adequate capacity. Inside walls and floors of tank done with Cast-In-Situ Mosaic. Besides this, there will be a provision for a sump to store water for emergency purpose/feat overhead tank.
Boring & Tube Well:	Boring & tube well of adequate capacity for campus by direct/reverse circulation machine with adequate size.
Lift:	OTIS / KONE / Equivalent Standard Make Elevator in Apartment Block.
Power Backup:	Providing 500 watts Emergency Power Backup by Silent Genset to

LOCATION MAP



Building Address

Aditya Raghubansh Enclave
Shivgunj, Sital Tola
Bus Stand Road
Ara - 802301

A Project By

Aditya Builders
Boring Road, Patna
Mob. 9334732211, 7903070086